

Water is what makes the South Metro Denver region's incredible quality of life and growing economy possible.

## THE CHALLENGE

Historically, our region has relied too heavily on non-renewable underground aquifers for much of our water supply. These aquifers alone do not provide a sustainable supply for our community today or the families and businesses who will call our region home in the future.

## THE GOAL

We must diversify and increase our water supply to protect home values and jobs and provide a community our children and grandchildren can call home.



## THE PLAN

We have a four-part plan for a secure water future

**1**  
Add  
renewable  
water  
supplies

30,000 acre-feet of additional renewable water supplies by 2065

**2**  
Develop  
additional  
storage

both surface and underground to help firm existing and future supplies

**3**  
Manage  
water  
quality

so we can squeeze every drop out of the water we have

**4**  
Conserve  
and use  
water  
efficiently

becoming even better stewards of this precious resource

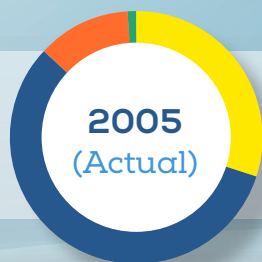
This plan:

Supports jobs.

Protects property values.

Provides economic growth.

We are on our way to achieving a sustainable, balanced, supply:



### SMWSA Historic & Projected Supplies

- Renewable
- Non-renewable
- Reuse of non-renewable
- Reuse of renewable

South Metro Water Supply Authority and our 13 water provider members work to provide a secure water future in the region for future generations.

Arapahoe County Water and Wastewater Authority (ACWWA)

Castle Pines North Metropolitan District

Centennial Water & Sanitation District

Cottonwood Water and Sanitation District

Dominion Water & Sanitation District

East Cherry Creek Valley Water & Sanitation District (ECCV)

Inverness Water & Sanitation District

Meridian Metropolitan District

Parker Water & Sanitation District

Pinery Water & Wastewater District

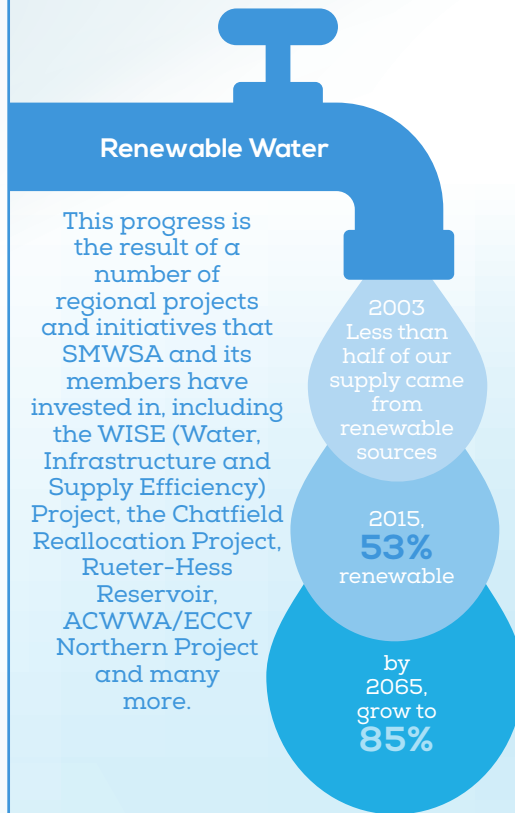
Rangeview Metropolitan District

Stonegate Village Metropolitan District

Town of Castle Rock

## OUR PROGRESS

We are making tremendous progress.



## Conservation

It is also the result of a wide range of strong and effective conservation efforts that have made the South Metro region a leader in conservation and water stewardship in the state.

Statewide Water Plan Goal for the Metro Area  
**129 gallons per day**

South Metro Water 2014  
**120 gallons per day**



Decreased per capita water demand by **30%**

Reuse SMWSA members are fully reusing their supplies

## SINCE 2004, THREE PILLARS HAVE GUIDED OUR SUCCESS:



### Partnerships

We are leveraging our relationships with water providers and local governments in the region to share water, infrastructure and other resources that will help ensure a secure water future for the citizens of the South Metro region.



### Investment

SMWSA and our members are investing in a significant number of supply and storage projects that will help bring us the water current and future generations will need.



### Efficiency

Our region has become a statewide leader in conservation and the efficient use of water, boasting one of the lowest water use rates in the state.